

THE
MAGAZINE
LUXURY LIFESTYLES

ARCHITECTURE

ARCHITECTURAL PILLARS

ARCHITECTS
TOP 10 New Designs

DEVELOPERS
TOP 5 Developments

URBAN PLANNING
World-Renowned

SPRING
FASHION
&
TOURS

PSRST STD
U.S. POSTAGE
PAID
PASADENA, CA
PERMIT #422

PASADENA
FOOTHILLS
REGION

APRIL 2008 • VOL 2 ISSUE 4

NEWSSTAND PRICE \$6.95
WWW.THEMAGAZINELL.COM

Efficiency. Economy. Retention. Rear View Mirror Holdings, Inc. (RVM) was founded by Doug Huberman in 1997. In 2000, RVM began assembling assets in Old Town Pasadena with the intention of establishing enclaves of art, culture and entertainment on its historic side streets and in the Playhouse District. This vision sparked efforts in raising funds for the

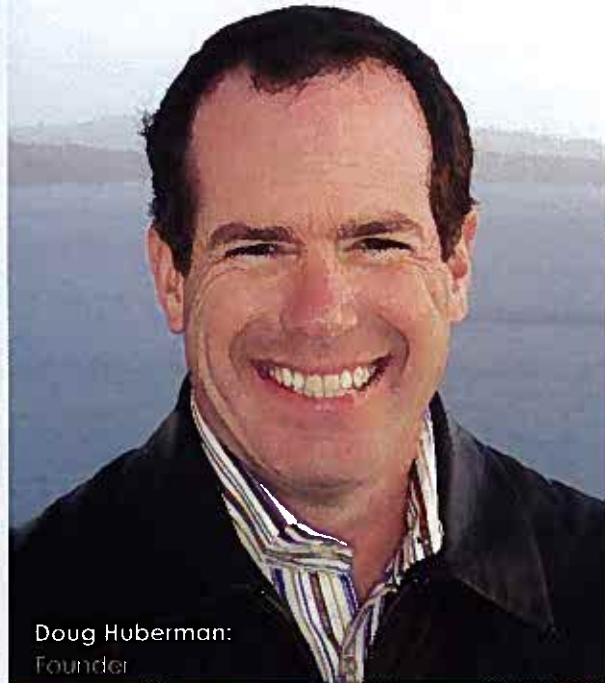
renovation of the Levitt Pavilion band shell in Memorial Park, of which Doug now serves as Co-Chair to Friends of the Levitt Pavilion. He is a co-founder of the Colorado Ski School for the Blind and is leading the effort to both save the entry arch to the first public library built in the state of California and endow the nation's largest poetry and book reading series. In a

short time, RVM has expanded through the development of mixed-use commercial/residential real-estate projects, as well as providing the very best personalized and technologically advanced property management services to property owners, in both California and Arizona.



A R T S

C U L T U R E



Doug Huberman:
Founder

RVM ASSOCIATES

Corporate Office:
65 N. Raymond Ave., Suite 260,
Pasadena CA, 91103; (626) 792-8228;
RVMAssociates.com

Major Developments:
The Livingston Hotel and Condominiums;
496 S. Arroyo Parkway Mixed Use Complex;
175 Del Mar Ave. Mixed Use Complex; The
Boston Centennial Building.

Photo courtesy of RVM Associates
Rendering courtesy of American General Design